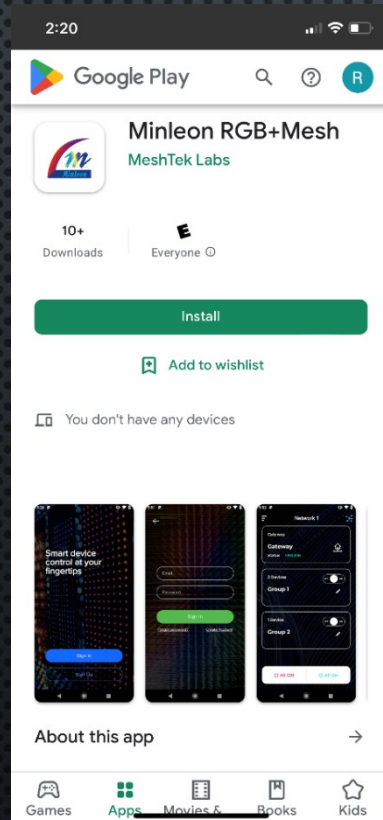
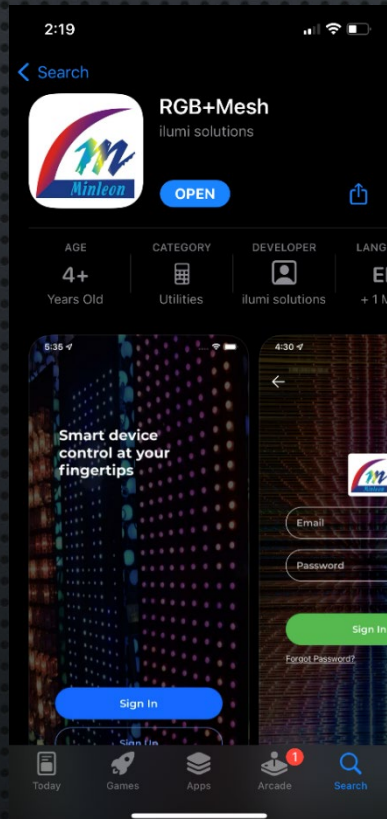


# Two Apps for Two Uses

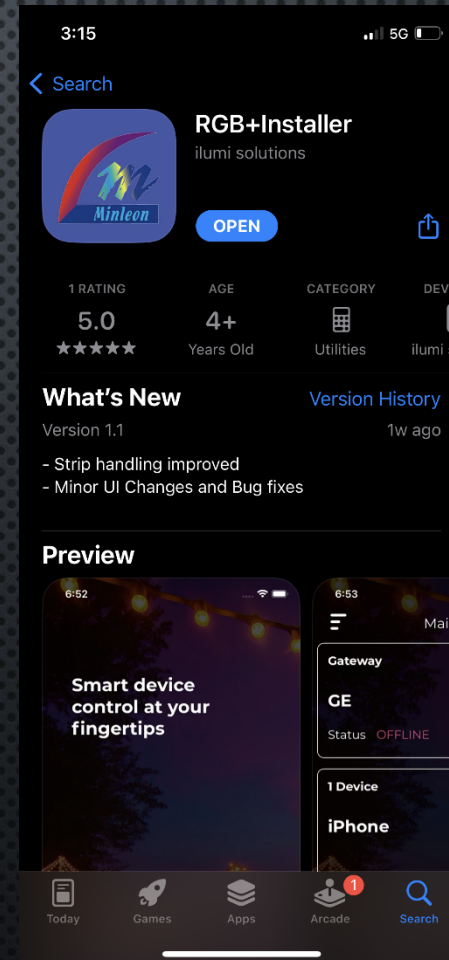
Look for the Minleon logo ...

## “RGB+Mesh” End-USER APP:

Available for both Android & iOS Devices, schedule & control lights, but no configuration access or ability to ADD new devices.



“RGB+Installer”  
INSTALLER APP:  
Available only on iOS platform. ADD Devices, configure fixture types & string lengths. Will house updates appealing to contractors & installers, that end-user clients cannot access or mis-use.



**Pro Tip:** You might notice the “Blueroots” app also controls some Minleon RGB+ strings. But future enhancements and bug fixes for Minleon RGB+ strings might only be available & unique to the “RGB+Mesh” app. This is the app Minleon will be supporting, as it will be tailored for the specific needs of our client base.